

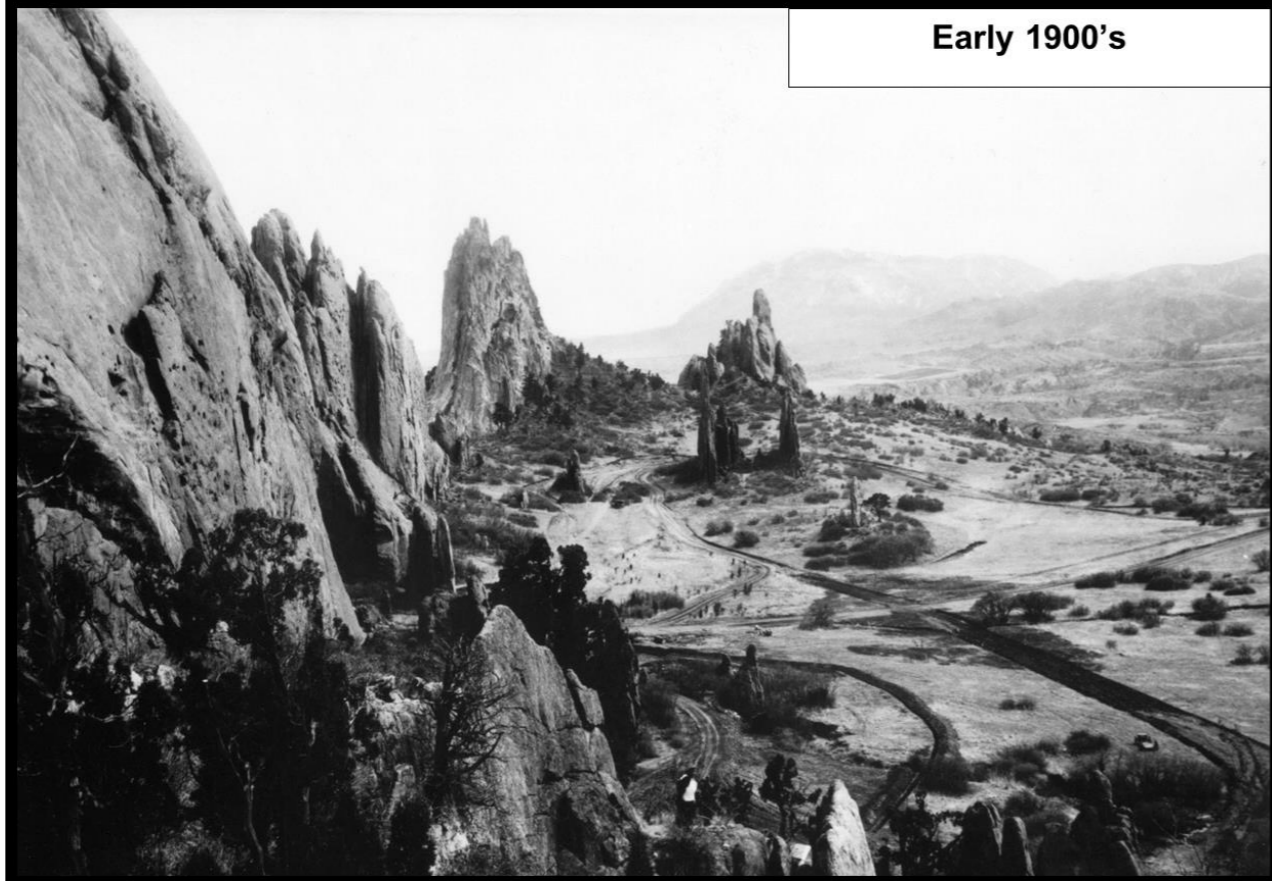


Colorado Springs
Fire Department



SHARING THE RESPONSIBILITY

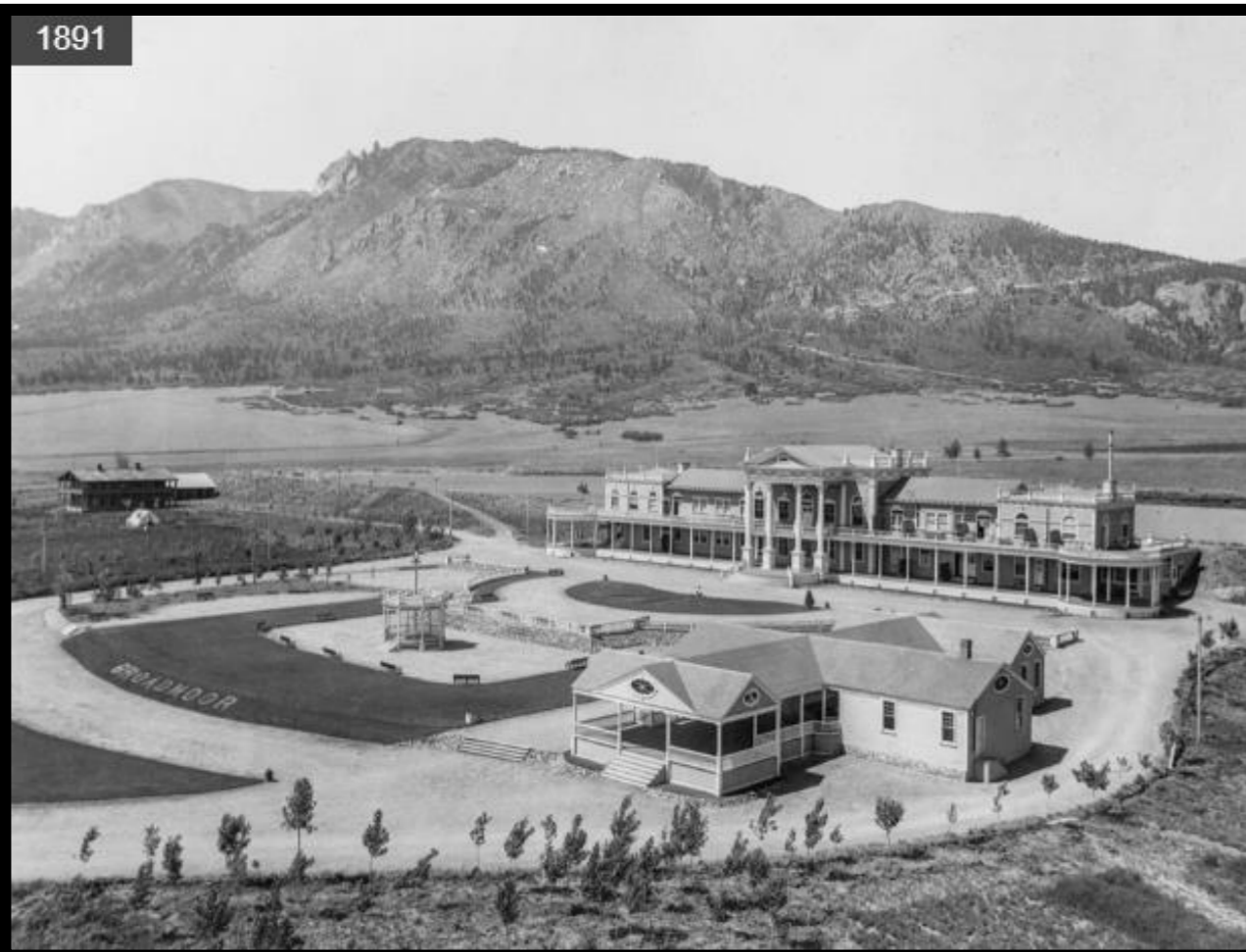
Early 1900's



Summer 2008



1891



1998





Roof Material: Class A

Deck Material: Ignition resistant or non combustible. Composite or metal

Vegetation Density

**Siding: Ignition Resistant Materials
-Stucco, Fiber-Cement Board, Stone**

Defensible Space

Address Visible From Street

Roofing and Siding

Class A Roofing

- Required on residential occupancies since 2003

Exterior Cladding & Siding

- Ignition Resistant Materials
- Fiber-cement board
- Stucco
- Masonry/Brick
- Stone



Decking Material

Ignition resistant or non-combustible:

- Composite
- Metal

Wood is permitted only for:

- Large structural components
- Railings



Protection of Overhangs & Projections

Overhangs

- Enclose Underside
- Ignition resistant products

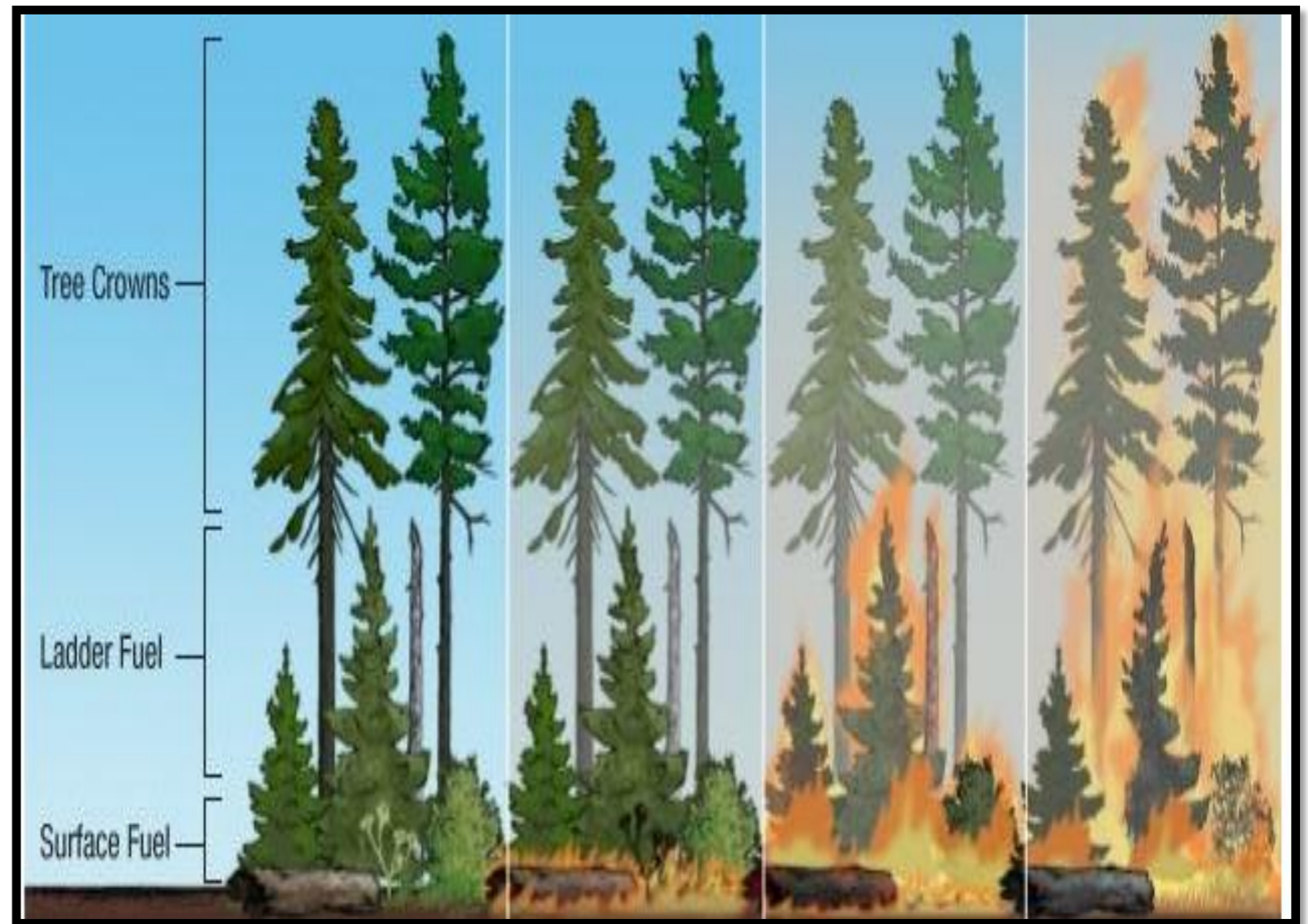
Base of Walls

- Fire Resistant Foam
- 1/8" Wire Mesh
- Metal Flashing/Stucco



Vegetation Management

- We do not support clear cutting
- Sustain Character Trees
- Maintain hillside aesthetic and healthy forests





**Not Clear Cutting or Fire Breaks
“Firewise Landscaping”**



**Vertical Arrangement
“Ladder Fuels”**







Horizontal Continuity







Reducing Your Wildfire Risk

- Keep rain gutters clear of leaves and pine needles
- Keep pine needles, leaves, grasses, and mulch on property to a maximum of 4 inches
- Prune lower branches, keeping at least 70% canopy of trees
- Use rock 1-3 feet around house instead of wood mulch
- **DO NOT** use the area on or under decks for storage of combustible items
- Cover window wells and keep them clear of leaves and needles
- Plant fire resistant species



Neighborhood Chipping Program

Falcon Estates: Week of October 19, 2020

How Can I Participate?

- Attend a Neighborhood Meeting
- Schedule a **free** Onsite Consultation

How do I Register?

- Call 719-385-7342
- Email: Ashley.Whitworth@coloradosprings.gov
- Visit our website: coloradosprings.gov/wildfiremitigation

Homeowners must register their address or their material will not be picked up



Chipping Guidelines

- **ONLY** woody limbs and branches up to 9" in diameter.
- Piles must be stacked neatly with butt ends facing roadway.
- Piles must be within 5 feet of roadway and be 5'x5'x5' in size.

Bad Examples



Good Examples



Contact Information

Ashley Whitworth

Acting Program Administrator

(719) 385-7342

Ashley.Whitworth@coloradosprings.gov



coloradosprings.gov/wildfiremitigation